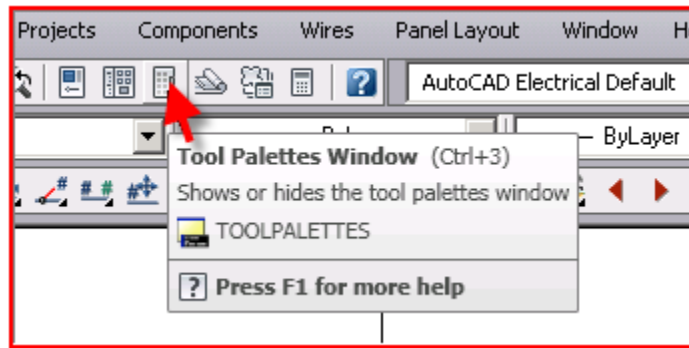
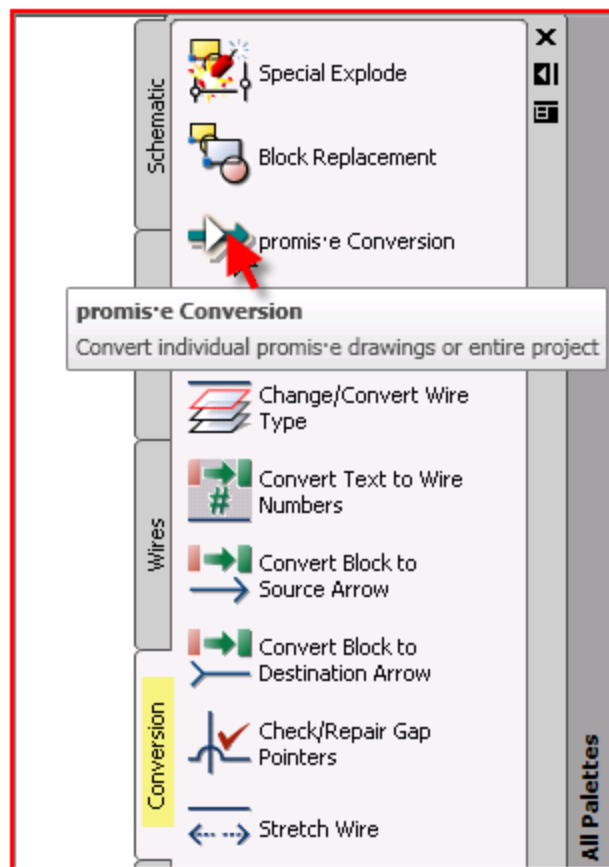


promis-e® to AutoCAD Electrical® Conversion Guide

1. If not already open activate the **Tool Palettes Window** (sidebar) from the top toolbar of AutoCAD Electrical®. This menu will anchor itself at the right of your screen.



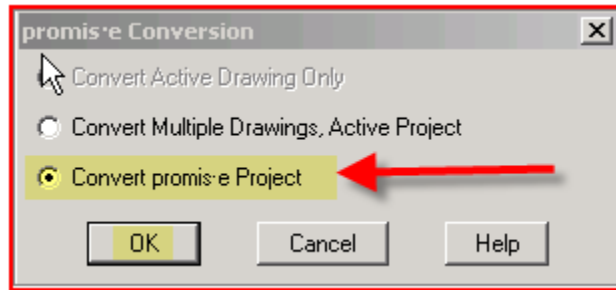
2. Click the **promis-e Conversion** option.



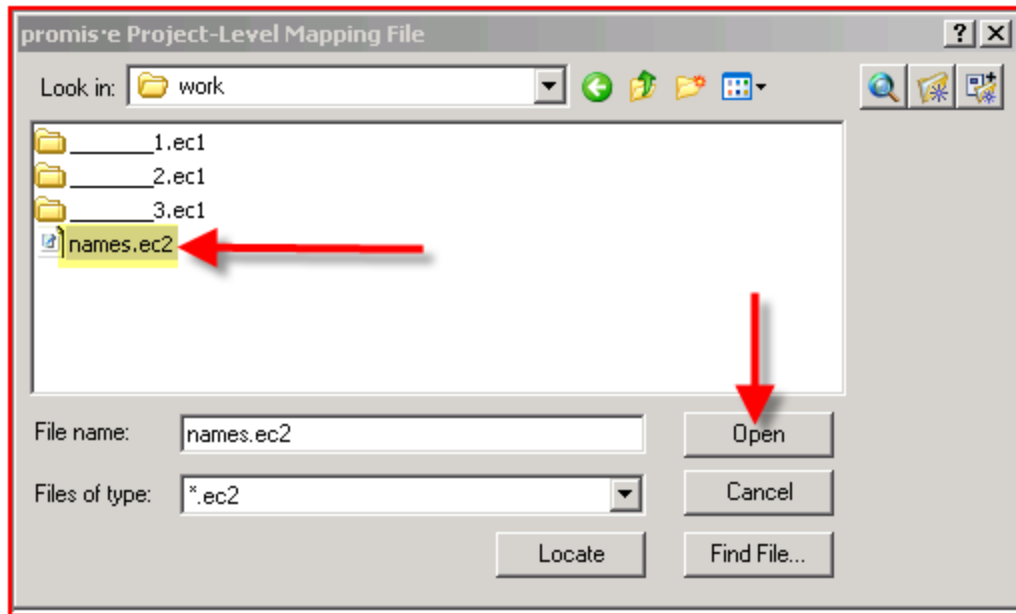
promis-e® to AutoCAD Electrical® Conversion Guide

Copyright © 2008 Douglas R. McAlexander
All Rights Reserved

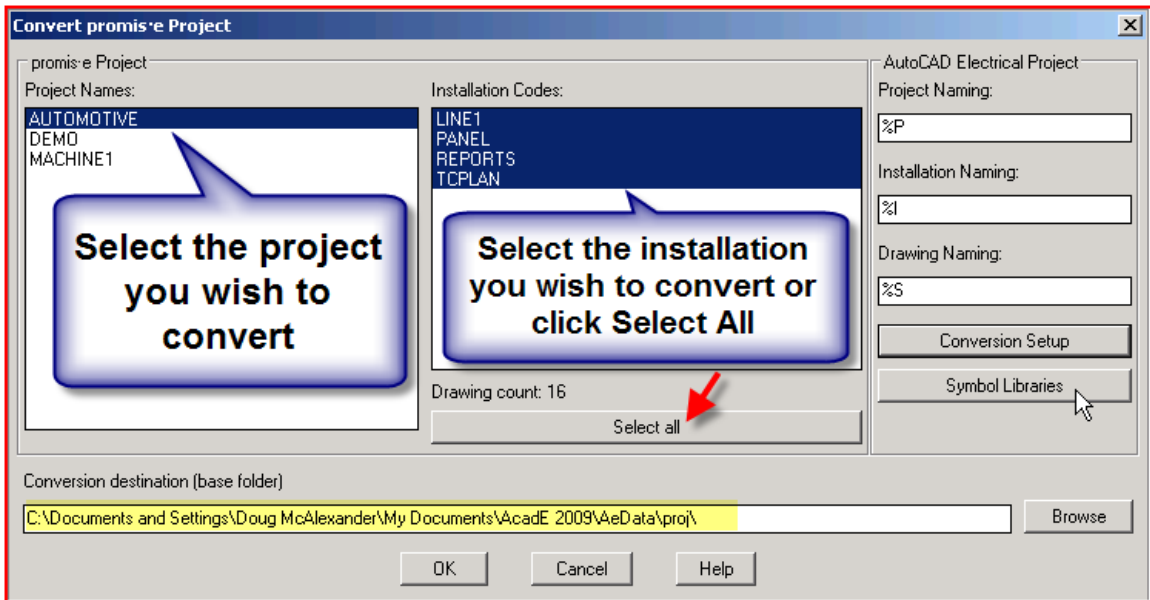
3. At the next dialog prompt select the radio button entitled “Convert *promis-e Project*” and click **OK**.



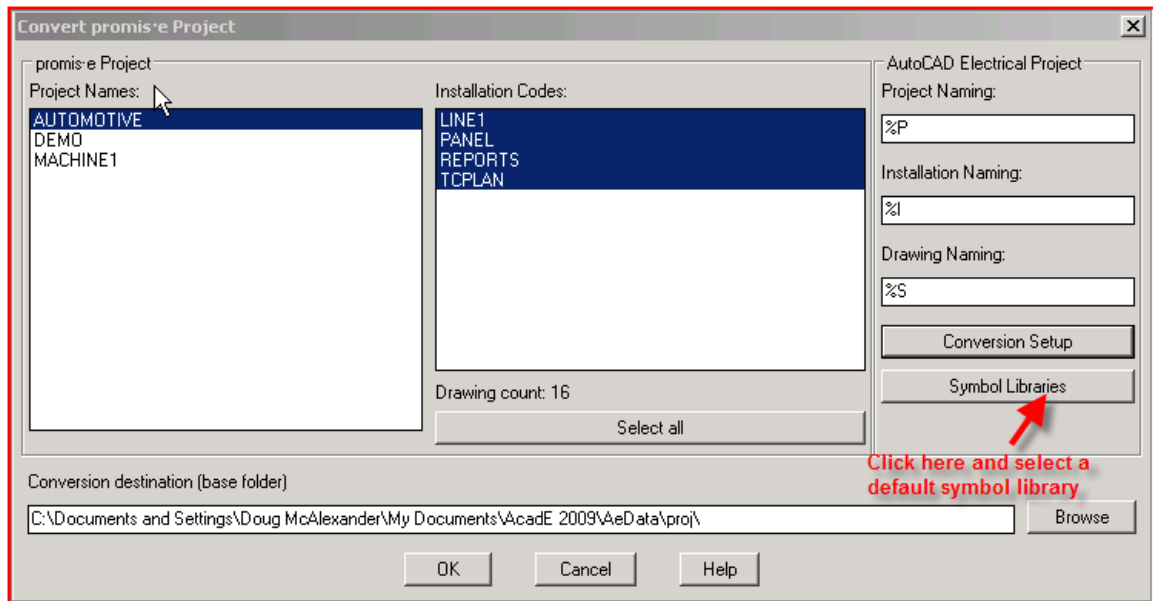
4. Browse to the work folder, which contains the project folders and the *names.ec2* file. Select the *names.ec2* file and click **Open**.



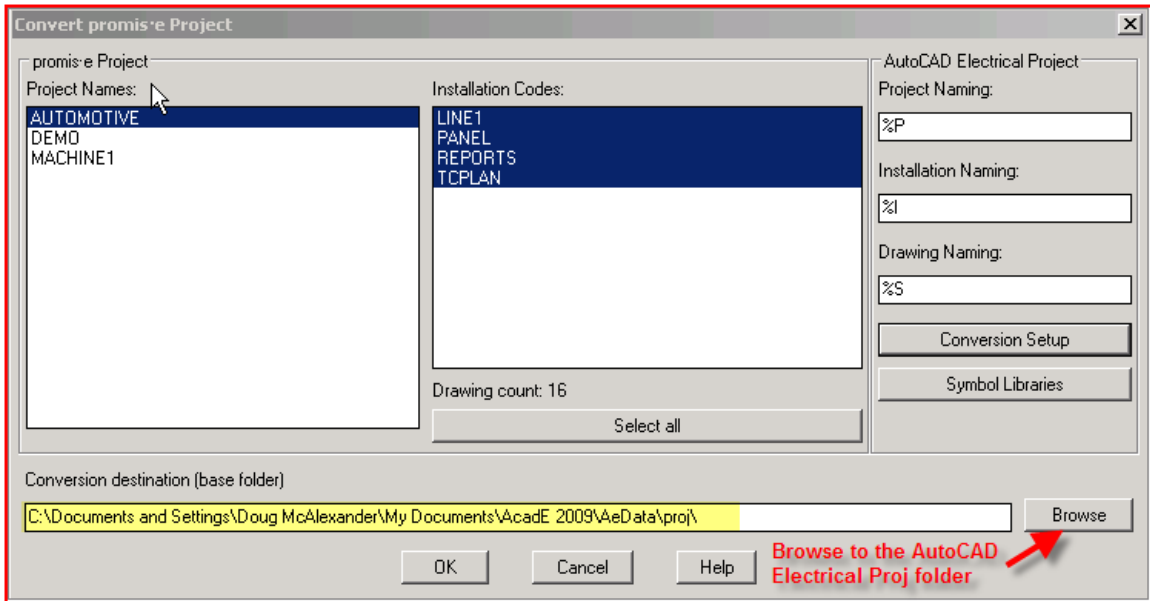
5. Select the **project name** you wish to convert. Select at least one **installation** from the *Installation Codes* window or click the **Select all** button to quickly select all installation codes.



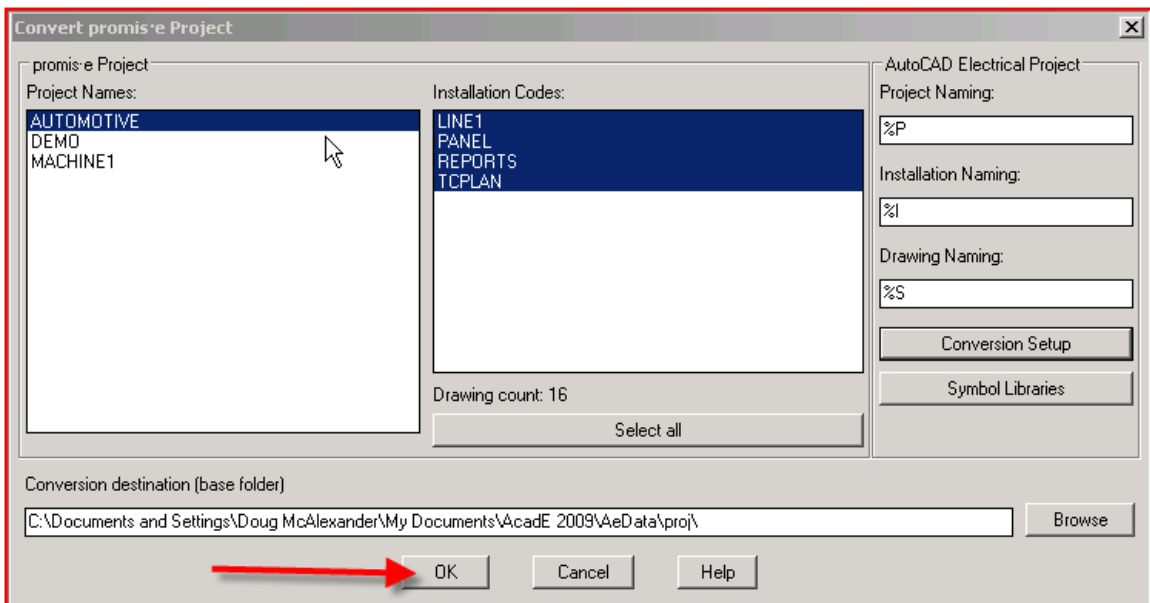
6. Click the **Symbol Libraries** button and browse to the AutoCAD Electrical® symbol library that you prefer as a default. *Hint: If you are converting a JIC or ladder-style project select either JIC1(0.1 text height) or JIC125 (0.125 text height).*



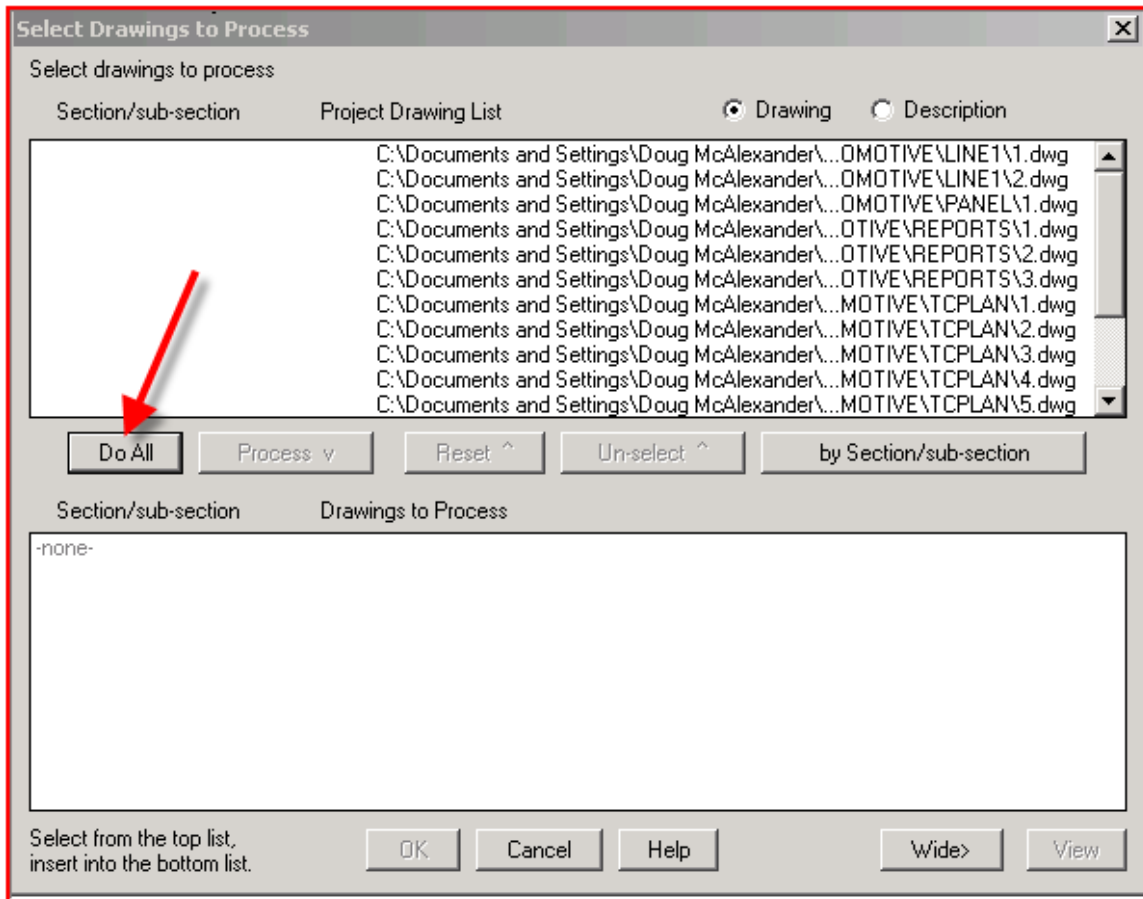
7. Click the **Browse** button and **set the path** to the AutoCAD Electrical® project folder, which is usually named **Proj**. *Hint: Do not create a new project folder. The conversion utility will create this based upon the **promis-e**® project name.*



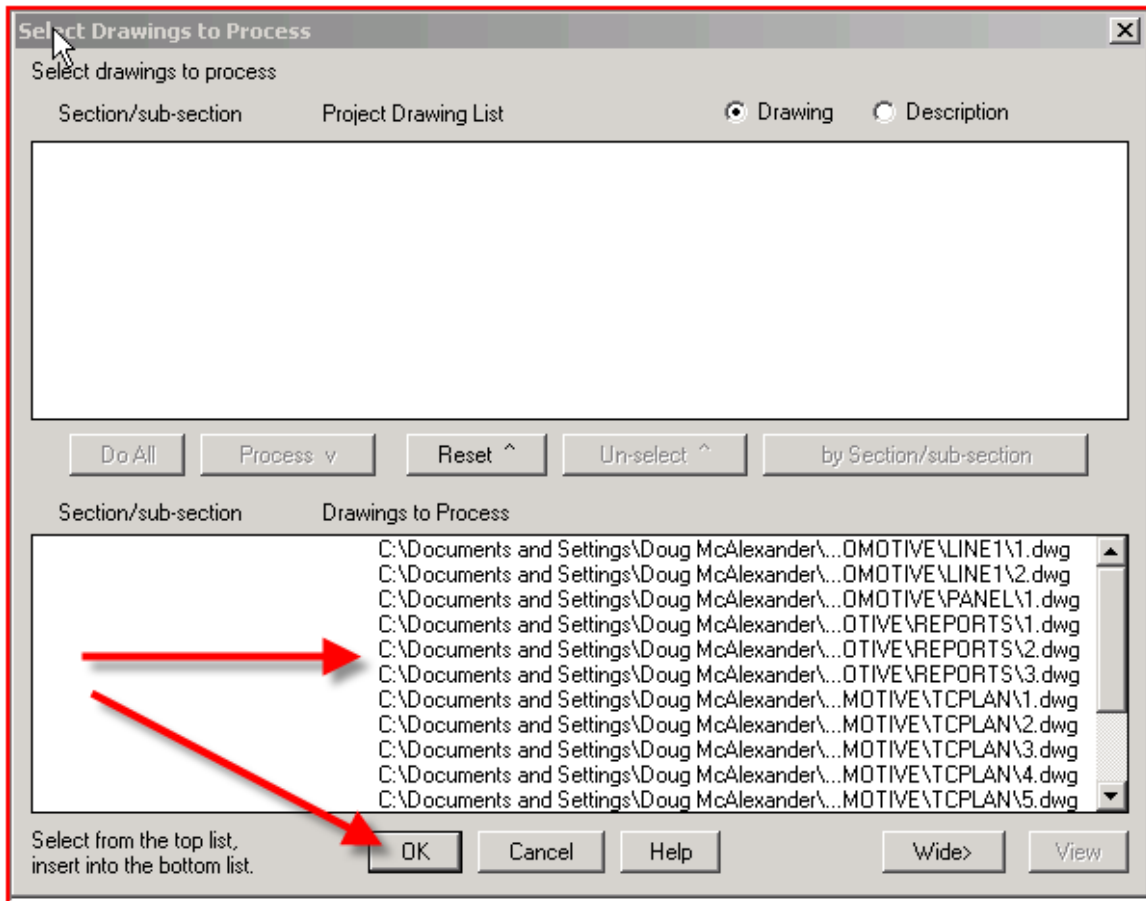
8. Click OK.



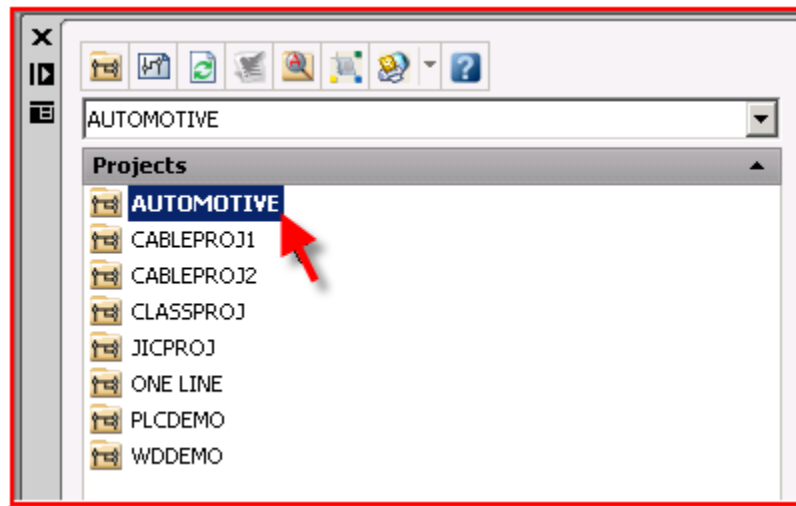
9. At the next dialog you can **select specific drawings** from within the **promis-e** project that you wish to include in the conversion, or click **Do All** to quickly select all drawings.



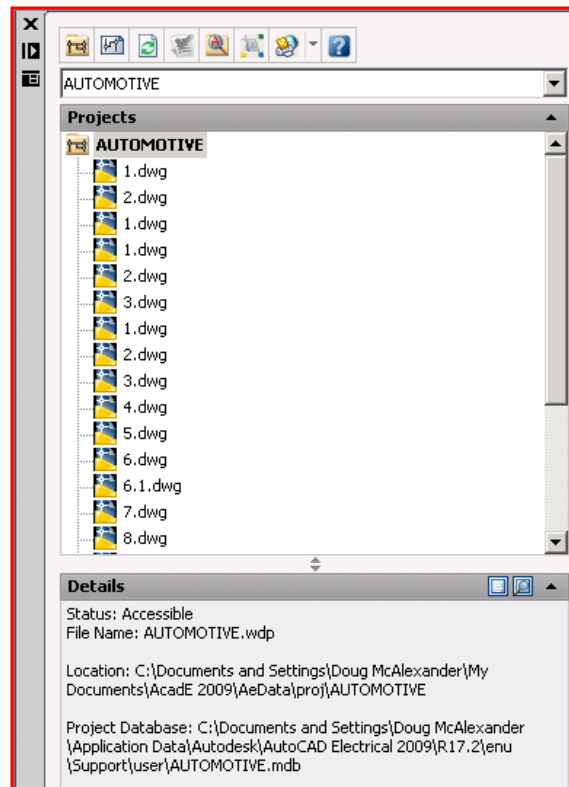
10. The selected drawings will move to the bottom window. Click **OK**.




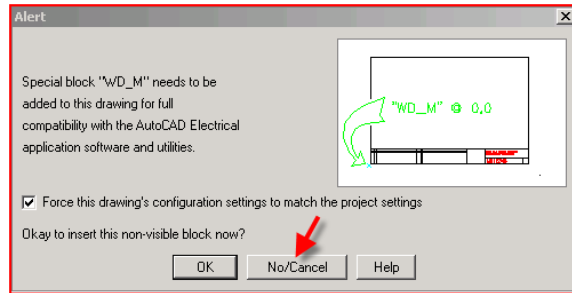
11. The project/drawings are converted and the converted project becomes the active project in the AutoCAD Electrical® **Project Manager**.



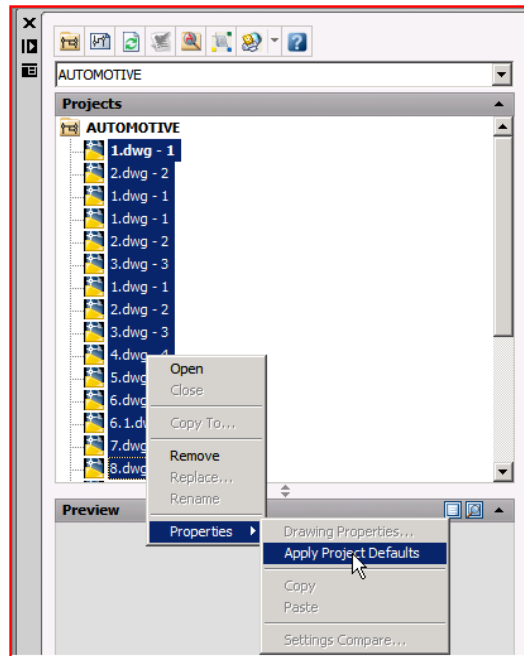
12. Double-click the converted **promis-e** project in the Project Manager to view the list of converted drawings.



13. The conversion process *doesn't convert the drawing data* but converts the project data and copies the drawings from the **promis-e** folder path to the AutoCAD Electrical® project path.
14. Double-click one of the converted drawings to open it into the viewer. Click the AutoCAD Electrical® **Edit Component** command.  You will receive a prompt to insert the WD_M block; the required hidden block to enable AutoCAD Electrical® functionality. Click **No/Cancel**.



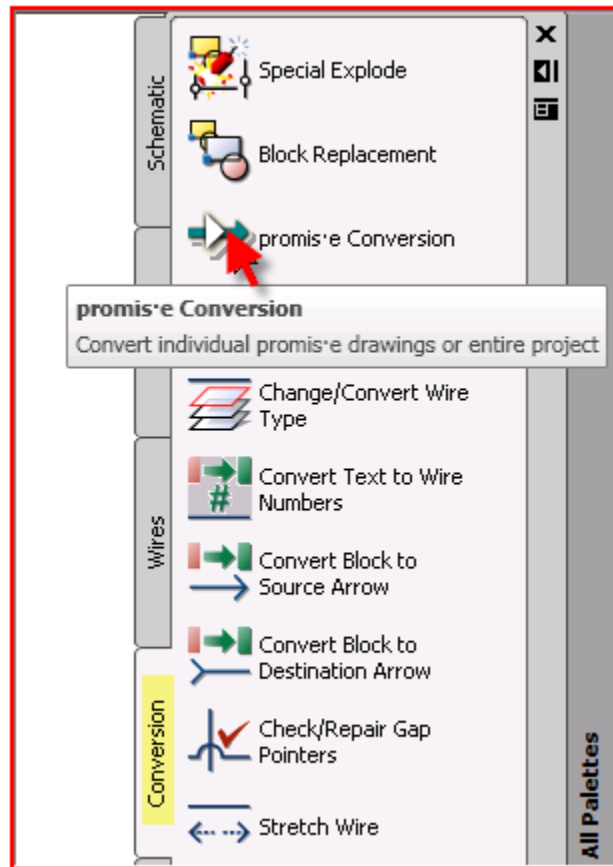
Step 15 will convert the individual drawings and add the WD_M block automatically. The WD_M block is found in each symbol library folder of AutoCAD Electrical®. This block stores the drawing properties for the AutoCAD Electrical® drawing environment. This would include such preferences as the component tagging format, wire numbering format, PLC style, ladder styles and sizes, etc. Once the drawings are converted the settings can be edited by right-clicking on the project name in the Project Manager and selecting Properties. Make your selections and click **OK**. **Note:** The project-level properties do not automatically apply to every drawing. The user might opt to use different drawing properties settings for certain drawings in a project. After the project level properties are selected, select any combination of project drawings or all project drawings using the CTRL and SHIFT keys of your keyboard. Right-click over any highlighted drawing and select Properties>Apply Project Defaults. The WD_M block of all selected drawings is updated.



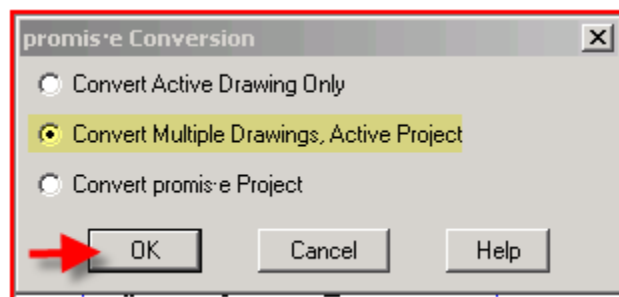
promis-e® to AutoCAD Electrical® Conversion Guide

Copyright © 2008 Douglas R. McAlexander
All Rights Reserved

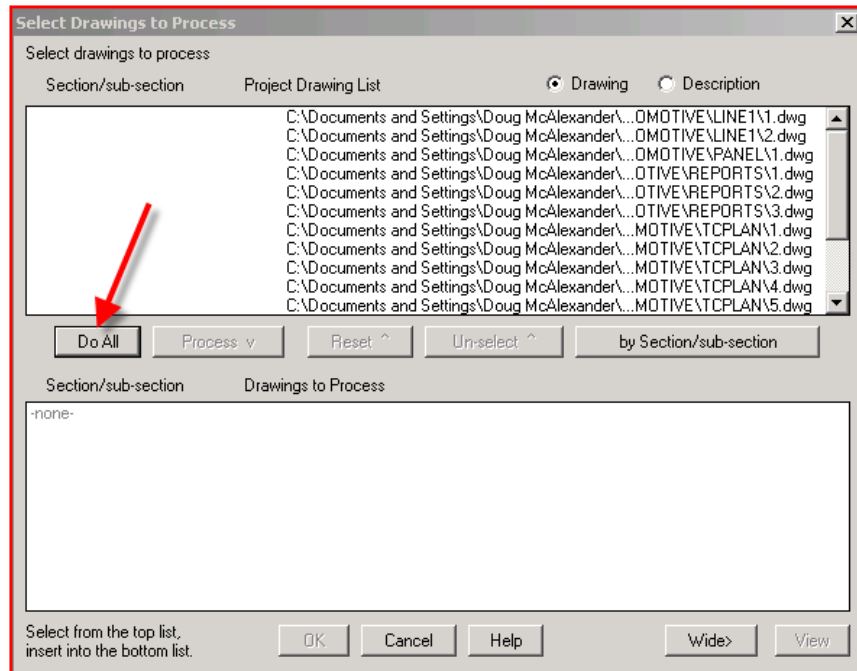
15. It will be necessary to execute the **promis-e** conversion utility a second time in order to convert the actual drawing data to AutoCAD Electrical® format. Return to the Tool Palettes menu and select **promis-e** Conversion once more.



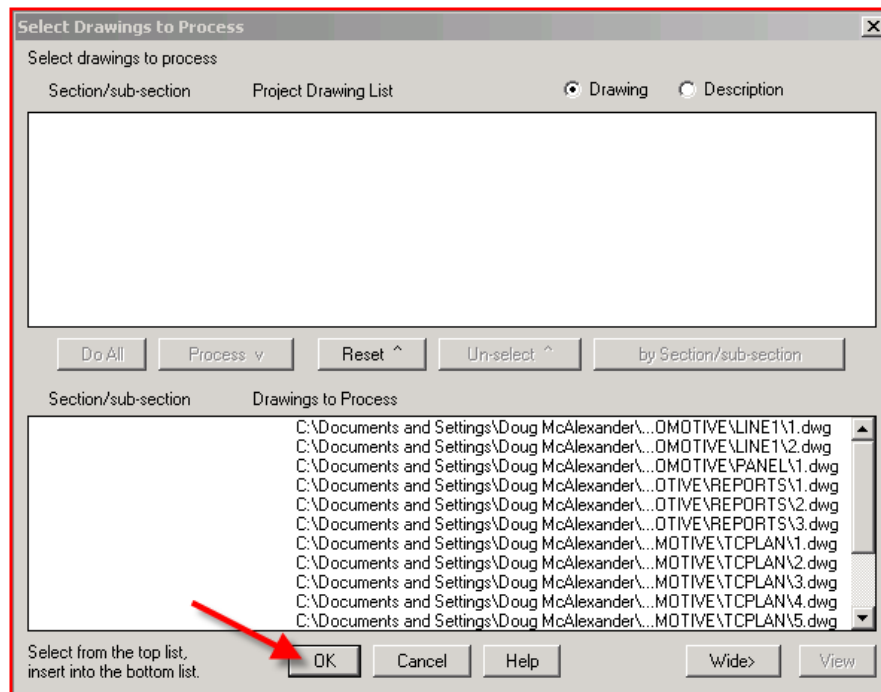
16. Select to **Convert Multiple Drawings, Active Project**. Click **OK**.



17. At the next dialog click **Do All**.

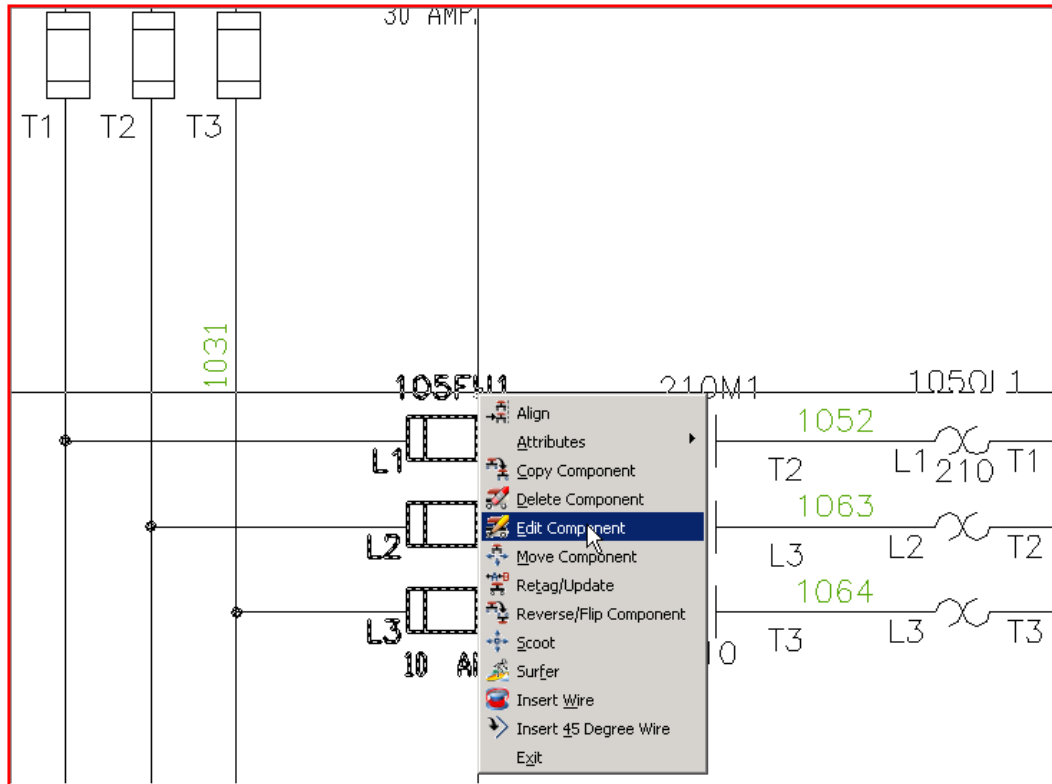


18. Click **OK**.

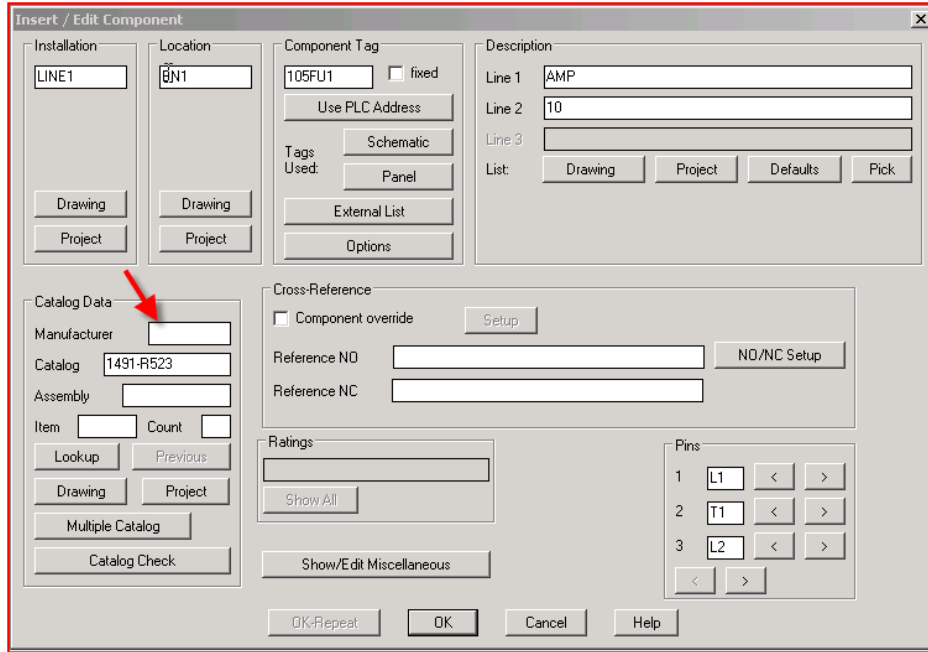


Hint: AutoCAD Electrical® will add appropriate attributes and extended entity data (xdata) as deemed necessary in order to make the **promis-e** symbols compatible with AutoCAD Electrical's editing functions. The command line will go active indicating the conversion is underway. Once the command prompt returns the conversion process will be complete.

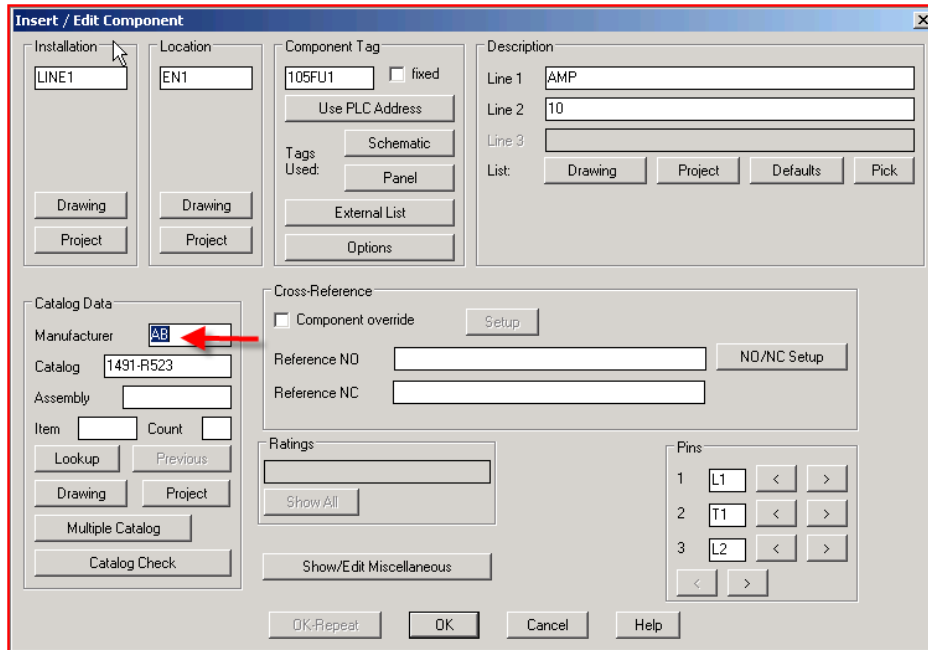
19. **Right-click** over a component and you should now get the AutoCAD Electrical® context menu. Select **Edit Component**.



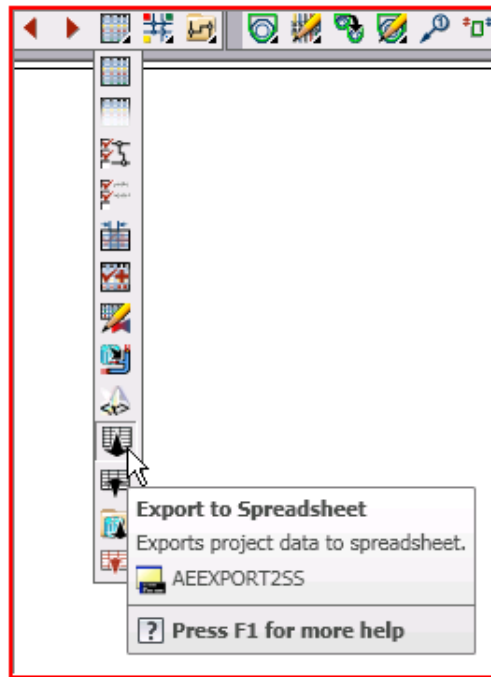
20. Notice that the MFG field is empty. This is due to the method that **promis-e**® uses to manage vendor information.



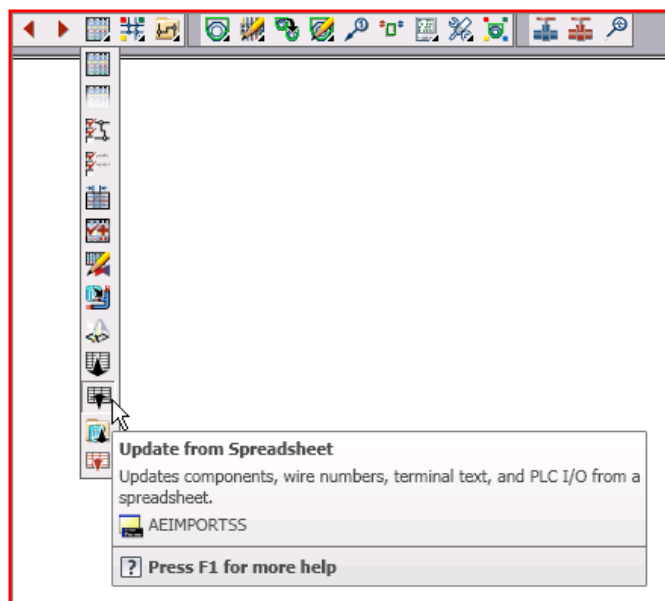
21. It will be necessary to enter the missing vendor name in all components. You cannot click Lookup and assign the vendor from the AutoCAD Electrical® catalog database because the symbol name of the **promis-e**® symbol does not match the table names in AutoCAD Electrical®.



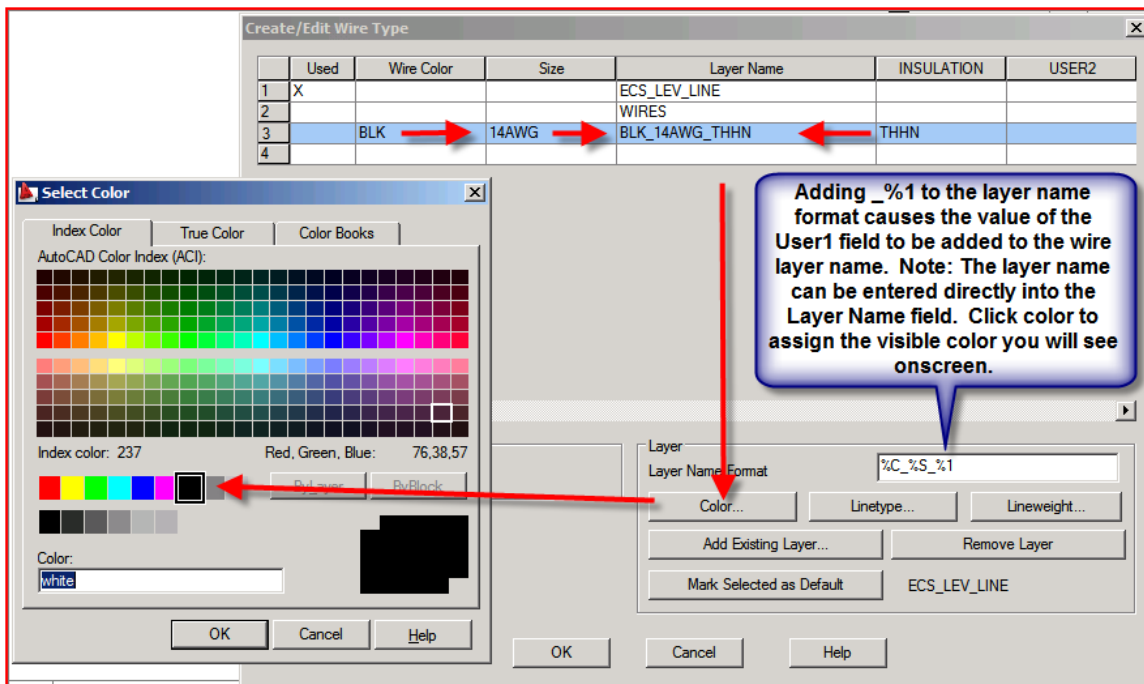
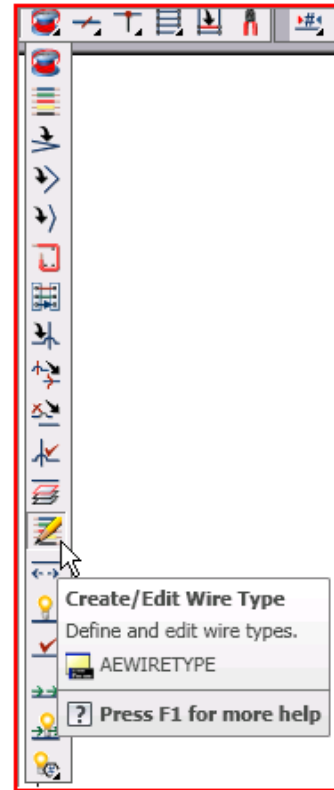
22. Another approach to fill in the MFG data would be to use the AutoCAD Electrical® **Export to Spreadsheet** tool. Use the power of Excel ® to fill in the MFG column. **Save** the spreadsheet file.



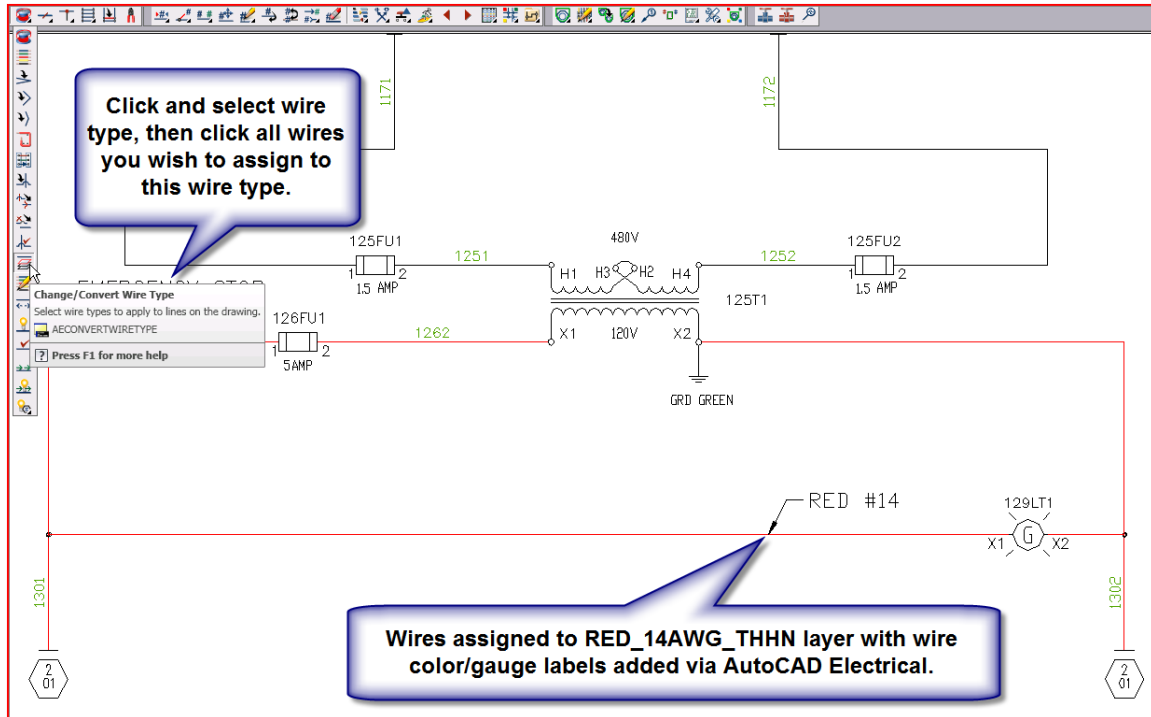
23. Use AutoCAD Electrical's **Update from Spreadsheet** tool to update the project and automatically fill in the missing MFG data.



24. The lines in the **promis-e**® drawings that represent wires are normally on a layer called ECS_LVL_LINE or something similar. AutoCAD Electrical® allows users to assign each line entity that represents a wire to a specific layer that denotes the color, size, and type of wire. You can add these wire types to the converted drawings by clicking on Create/Edit Wire Type and adding the wire types. You can even set the color so the wires appear in their respective color. Once the wire types are entered, click **OK**.



25. Click on **Change/Convert Wire Type**, select one of the wire types entered in step 24 and click on any/all wires you wish to assign to this wire type and press the **Enter** key on your keyboard.



Your converted drawings can now be edited and plotted with AutoCAD Electrical®.